

sage

Pastel Evolution
Business Partner
Software Solutions

sage

Pastel Evolution
Business Partner
Software Solutions



xperdyte[®]

ADVANCED MANUFACTURING SOFTWARE

XPERDYTE MANUFACTURING is a software development and distribution company specialising in manufacturing software for Sage Pastel Accounting & ERP. Our software solution is sold and supported by our business partners and certified value added resellers.



xperdyte[®]

ADVANCED MANUFACTURING SOFTWARE

XPERDYTE MANUFACTURING is a Sage Pastel Software Solution Partner that seamlessly integrates with Sage Pastel Evolution ERP to provide a cost effective solution for improved manufacturing resource planning. From material requirement planning to production scheduling, XPERDYTE MANUFACTURING for Sage Pastel provides you with user friendly tools to successfully manage your business.

BILL OF MATERIALS AND COSTINGS

The Bill of Materials and Costings module form the base for setting standards against which Works Orders are measured, thereby enabling accurate costings, effective efficiency and complete control.

Elements of costs:

- Machine and overheads
- Materials and components
- Labour and set-up time
- Outwork
- Other production and product costs

True production costing in terms of:

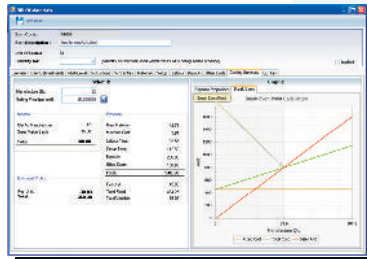
- Allocation of costs into fixed and variable costs
- Compensation for yield losses
- Powerful 'what if' costing scenario

Full quality control functionality:

- Setup QC test methods
- Apply these methods to BOM's

Multiple BOM's per finished goods:

- Create BOM's for economic quantities ensuring optimum costs



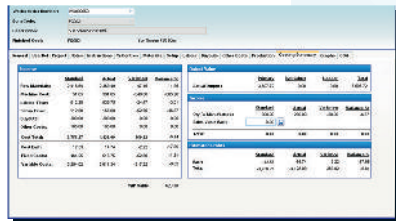
Achieve accurate costings

WORKS ORDERS AND WORK IN PROGRESS

Works Orders control the actual running and measurement of performance in production. Production feedback records the actual usage of Materials, Machine, Set-up and Labour Time, Outwork and any other costs incurred in production.

There are a number of costing methods available i.e. Standard Cost, Actual Cost or Set Cost. Production output allows for primary products, by products and direct to general ledger accounts to be processed. Yield losses at parent product as well as raw materials can be measured against standards.

- Product routing through works centres
- Prioritise works orders
- Compare actual performance against pre-determined standards
- Allows barcode scanning for production feedback
- Customisable works order status



Measure performance



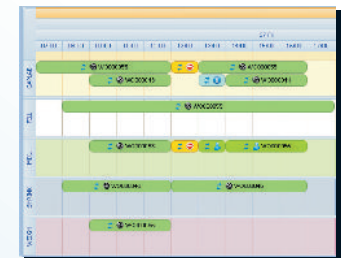
XPERDYTE MANUFACTURING for Sage Pastel endorses and promotes the principles of Lean Manufacturing (the elimination of waste) which are entrenched in its architecture.

Effective methods for planning of materials and resources allows for the smooth and un-interrupted operation of the production unit as a whole.

PRODUCTION SCHEDULING

XPERDYTE MANUFACTURING for Sage Pastel Production Scheduling Module allows Works Orders to be scheduled at Work Centre level.

- Touch screens can be used to view and enter feedback from the factory floor.
- Graphical representation of scheduling is effortless.
- Users can drill down to the machine and operators performing the works order with start and stop times.

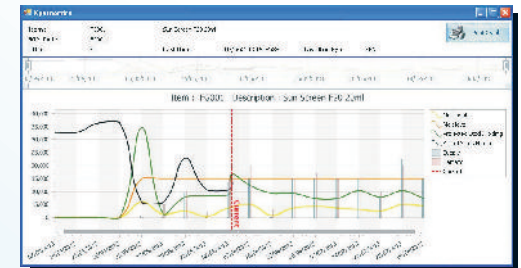


Schedule your calendar

MATERIAL REQUIREMENT PLANNING (MRP)

A Material Requirement Planning (MRP) system is intended to simultaneously meet three objectives:

- To ensure that materials are available for production and products are available for customers.
- Maintain the lowest possible material and production levels in store.
- Plan manufacturing activities, delivery schedules and purchasing activities.



Forward planning made simple